

Sunday

Monday

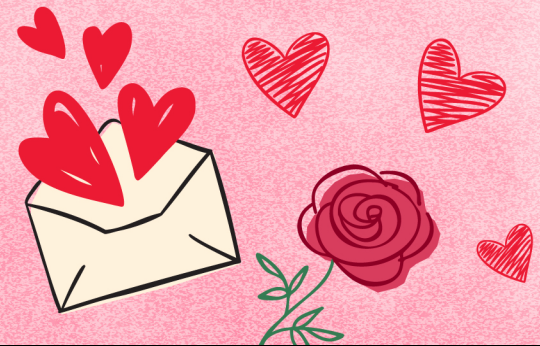
Tuesday

Wednesday

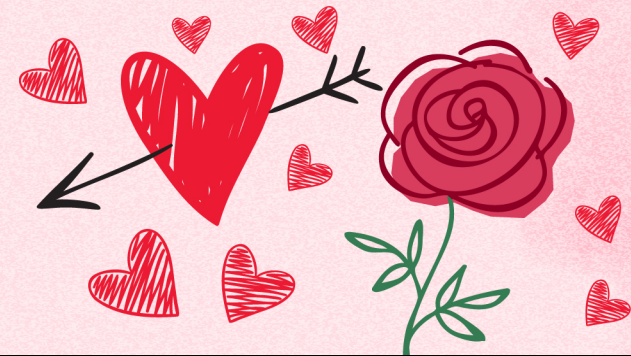
Thursday

Friday

Saturday



# February 2025



<p>9:00AM-Morning Service <b>2</b>  10:00AM-Chapel Service  12:30PM- Daily Chronicle  1:30PM- Afternoon Exercises  2:30PM- Bingo Fun  3:30PM- Shop At The Corner Store  5:00PM- TV Time</p> <p>Groundhog Day</p>		<p>9:30AM- Morning Exercise <b>3</b>  10:30AM- Daily Chronicle  12:30PM-Sing Along  1:30PM- Trivia Time  2:30PM- Art Fun: Valentine's Door Wreaths  3:30PM- Monthly Gazette Reading  5:00PM- TV Time</p>		<p>9:00AM- Music w/ Pat <b>4</b>  10:30AM- Daily Chronicle  12:30PM- Trivia Time  1:30PM- Balance &amp; Mobility  2:30PM- Calendar, Wheelchair &amp; Walker Decorations  3:30PM- Sing Along  5:00PM- TV Time</p>		<p>9:30AM- Hymn Singing &amp; Devotional Reading <b>5</b>  10:30AM- Daily Chronicle  12:30PM- Flower Club  1:30PM- Health &amp; Wellness w/ Marcelle  3:30PM- Valentine's Family Feud  5:00PM- TV Time</p>		<p>9:30AM- Health &amp; Wellness w/ Marissa <b>6</b>  12:30PM-Sing Along  1:30PM- Balance &amp; Mobility  2:30PM- Bingo Fun  3:00PM- Entertainment: Charis Youth String Orchestra  5:00PM- TV Time</p>		<p><b>National Ballet Day</b> <b>7</b>  9:30AM- Health &amp; Wellness w/ Marissa  12:30PM- Sing Along  1:30PM- Entertainment: Randy Taylor  2:00PM- Catholic Mass w/ Father Nicholas  2:30PM- Daily Chronicle  3:00PM- Ballet History &amp; Watching  5:00PM- TV Time</p>		<p><b>9:30AM- Morning Stretches</b> <b>1</b>  10:30AM- Daily Chronicle  12:30PM- Sing Along  1:30PM- Puzzles &amp; Music  2:30PM- Bingo Fun  3:30PM- Shop At The Corner Store  5:00PM- TV Time</p>	
<p>9:00AM-Morning Service <b>9</b>  10:00AM-Chapel Service  12:30PM- Daily Chronicle  1:30PM- Afternoon Exercises  2:30PM- Bingo Fun  3:30PM- Shop At The Corner Store  5:00PM- TV Time</p>		<p>9:30AM-Morning Exercise <b>10</b>  10:30AM- Daily Chronicle  12:30PM- Sing Along  1:30PM- Baking Club: Chocolate Covered Strawberries  2:30PM- Art Fun: Heart Flowers  3:30PM- Spa Time  5:00PM- TV Time</p>		<p>9:30AM- Music w/ Pat <b>11</b>  10:30AM- Daily Chronicle  12:30PM- Valentine's Ginkgo Cafe  1:30PM- Balance &amp; Mobility  2:00PM-Chef Francois Demonstration: Chocolate Fondue  3:00PM- Art Fun: Love Bug  5:00PM- TV Time</p> <p>1:00PM-2:00PM- Alzheimer's Association Talk</p>		<p>9:30AM- Valentine's Day Card Making <b>12</b>  10:30AM- Daily Chronicle  12:30PM- Flower Club  1:30PM- Health &amp; Wellness w/ Marcelle  3:30PM- Hymn Singing  5:00PM- TV Time</p> <p>Tu B'Shevat Begins</p>		<p>9:30AM- Health &amp; Wellness w/ Marissa <b>13</b>  12:30PM- Sing Along  1:30PM- Balance &amp; Mobility  2:30PM- Bingo Fun  3:30PM- Shop At The Corner Store  5:00PM- TV Time</p>		<p>9:30AM- Health &amp; Wellness w/ Marissa <b>14</b>  12:30PM- Sing Along  1:30PM- Entertainment: Two For The Show  2:30PM- Valentine's Day Social  3:30PM- Daily Chronicle  5:00PM- TV Time</p> <p>Valentine's Day</p>		<p>9:30AM- Morning Stretches <b>15</b>  10:30AM- Daily Chronicle  12:30PM- Sing Along  1:30PM- Puzzles &amp; Music  2:30PM- Bingo Fun  3:30PM- Shop At The Corner Store  5:00PM- TV Time</p>	
<p>9:00AM-Morning Service <b>16</b>  10:00AM-Chapel Service  12:30PM- Daily Chronicle  1:30PM- Afternoon Exercises  2:30PM- Bingo Fun  3:30PM- Shop At The Corner Store  5:00PM- TV Time</p>		<p>9:30AM-Morning Exercise <b>17</b>  10:30AM- Daily Chronicle  12:30PM- Sing Along  1:30PM- Trivia Time  2:30PM- Crossword Puzzles  3:30PM- Spa Time  5:00PM- TV Time</p> <p>Presidents' Day (U.S.)</p>		<p>9:30AM- Music w/ Pat <b>18</b>  10:30AM- Daily Chronicle  12:30PM- Trivia Time  1:30PM- Balance &amp; Mobility  2:30PM- Art Fun: Q-Tip Painting  3:30PM- Sing Along  5:00PM- TV Time</p>		<p>9:30AM- Hymn Singing &amp; Devotional Reading <b>19</b>  10:30AM- Daily Chronicle  12:30PM- Flower Club  1:30PM- Health &amp; Wellness w/ Marcelle  3:30PM-Trivia Time  5:00PM-TV Time</p>		<p><b>National Muffin Day</b> <b>20</b>  9:30AM- Health &amp; Wellness w/ Marissa  12:30PM- Sing Along  1:30PM- Balance &amp; Mobility  2:30PM- Muffins &amp; Music  3:00PM- Bingo Fun  3:30PM- Shop At The Corner Shop  5:00PM- TV Time</p>		<p>9:30AM- Health &amp; Wellness w/ Marissa <b>21</b>  12:30PM- Sing Along  1:30PM- Entertainment: Johnny Hodges  2:30PM-Daily Chronicle  3:00PM- Movie Time: The Sound of Music Part 1  5:00PM- Movie Time: The Sound of Music Part 2</p>		<p><b>National California Day</b> <b>22</b>  9:30AM- Morning Stretches  10:30AM- Daily Chronicle  12:30PM- Sing Along  1:30PM- Poppy Coloring  2:30PM- Bingo Fun  3:30PM- Shop At The Corner Store  5:00PM- TV Time</p>	
<p><b>National Tile Day</b> <b>23</b>  9:00AM-Morning Service  10:00AM-Chapel Service  12:30PM- Daily Chronicle  1:30PM- Afternoon Exercises  2:30PM- Paper Tile Coloring  3:30PM- Bingo Fun  5:00PM-TV Time</p>		<p><b>National Tortilla Chip Day</b> <b>24</b>  9:30AM- Morning Exercise  10:30AM-Daily Chronicle  12:30PM- Sing Along  1:30PM- Baking Club: Salsa and Tortilla Chips  2:30PM- February Birthday Celebration  3:30PM- Spa Time  5:00PM- TV Time</p>		<p>9:30AM- Music w/ Pat <b>25</b>  10:30AM- Daily Chronicle  12:30PM- Trivia Time  1:30PM- Balance &amp; Mobility  2:30PM- Worship Sing w/ Joel, Kathy, &amp; Pastor Rob  3:30PM- Spa Time  5:00PM-TV Time</p>		<p>9:30AM- Hymn Singing &amp; Devotional Reading <b>26</b>  10:30AM- Daily Chronicle  12:30PM- Flower Club  1:30PM- Health &amp; Wellness w/ Marcelle  3:30PM- Johnny Cash Concert Video  5:00PM-TV Time</p>		<p>9:30AM- Health &amp; Wellness w/ Marissa <b>27</b>  12:30PM- Sing Along  1:30PM- Balance &amp; Mobility  2:30PM- Bingo Fun  3:30PM- Shop At The Corner Shop  5:00PM-TV Time</p>		<p><b>National Floral Design Day</b> <b>28</b>  9:30AM- Healt &amp; Wellness w/ Marissa  12:30PM- Sing Along  1:30PM- Entertainment: Jennifer Hart  2:30PM- Art Fun: Paper Flower Arrangement  3:30PM- Daily Chronicle  5:00PM- TV Time  Ramadan Begins</p>		<p><b>"It always protects, always trusts, always hopes, always perseveres. Love never fails."</b>  <b>1Corinthians13</b></p>	